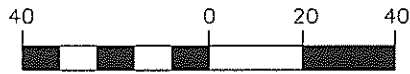


LEGEND

- QUANTITY OF PLANT
 PLANT KEY -
 REF. TO PLANT LIST
 QUE-VIR
 100 GAL.
- GAL. SIZES ARE MINIMUM.
 PLANTS TO BE SELECTED
 FOR OVERALL HT. & SPREAD
- PALM TREE CLEAR TRUNK HT.
- SHRUB/GROUNDCOVER AREA
- SOD



This plan may have been reduced in size. Verify before scaling dimensions

NOTE: GALLON SIZE SHOWN IS MINIMUM. PLANTS TO BE SELECTED FOR OVERALL HEIGHT AND SPREAD.

REFER TO SHTS. L4.01 & L4.02 FOR PLANT LIST

Prepared by:



planning, landscape architecture
 & graphic design
 423 south keller road, suite 300
 orlando, fl 32810
 phone 407.422.1449
 fax 407.875.0851
 FLORIDA LICENSE LCC 000027

RANDY RAIMAN
 FL. REG. # 460

REVISIONS					
DATE	BY	DESCRIPTION	DATE	BY	DESCRIPTION

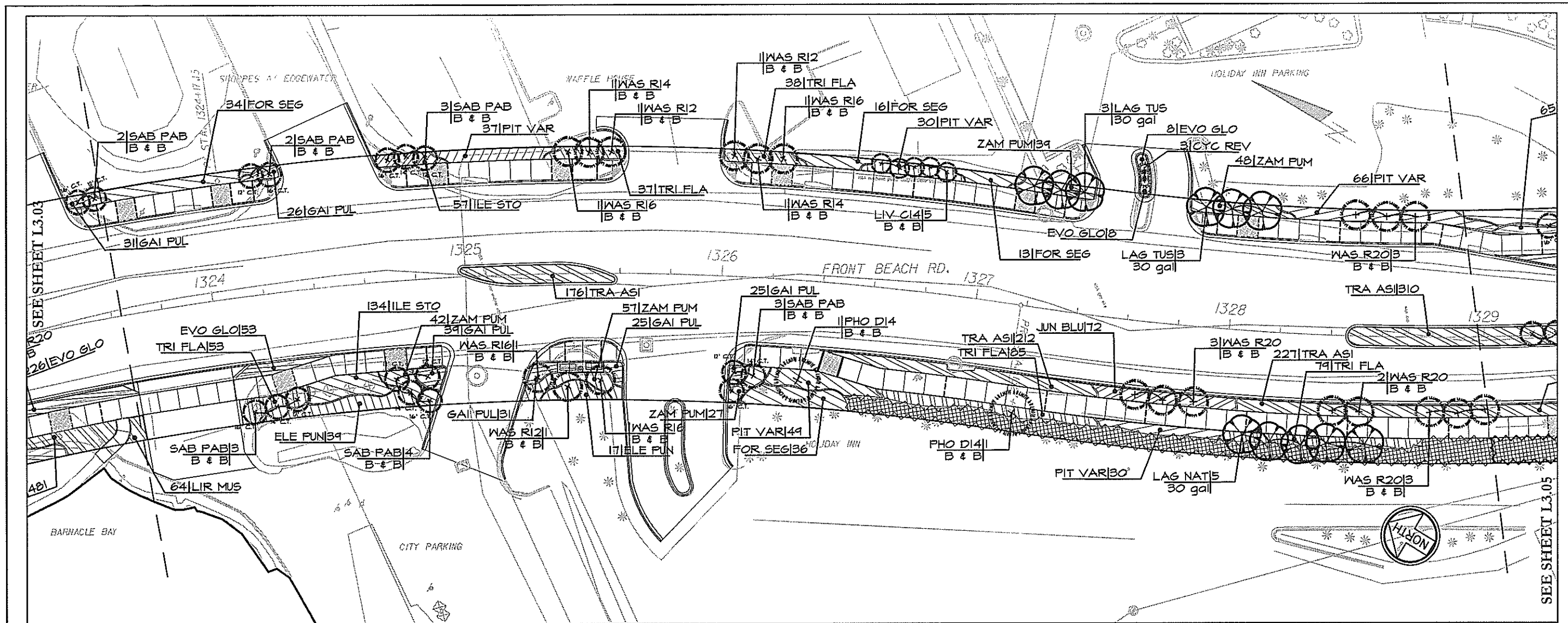
Engineer of Record:
PBSJ
 7406 Fullerton Street
 Suite 350
 Jacksonville, FL 32256
 (904) 363-6100
 www.pbsj.com
 Certificate of Authorization No. 24



CITY OF
PANAMA CITY BEACH
 CONSTRUCTION PLANS FOR:
 FRONT BEACH ROAD

LANDSCAPE PLAN
FRONT BEACH ROAD SEGMENT 2

SHEET NO.
L3.02

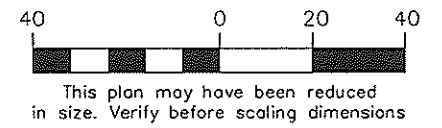


LEGEND

- QUANTITY OF PLANT
 PLANT KEY - REF. TO PLANT LIST
 GUE-VIR 120 GAL.
- 12 CT
 PALM TREE CLEAR TRUNK HT.
- SHRUB/GROUNDCOVER AREA
- SOD
- GAL. SIZES ARE MINIMUM. PLANTS TO BE SELECTED FOR OVERALL HT. & SPREAD

REFER TO SHTS. L4.014.02 FOR PLANT LIST

NOTE: GALLON SIZE SHOWN IS MINIMUM. PLANTS TO BE SELECTED FOR OVERALL HEIGHT AND SPREAD.



REVISIONS					
DATE	BY	DESCRIPTION	DATE	BY	DESCRIPTION

Engineer of Records:
PBS & J
 7406 Fullerton Street
 Suite 350
 Jacksonville, FL 32256
 (904) 363-6100
 www.pbsj.com
 Certificate of Authorization No. 24

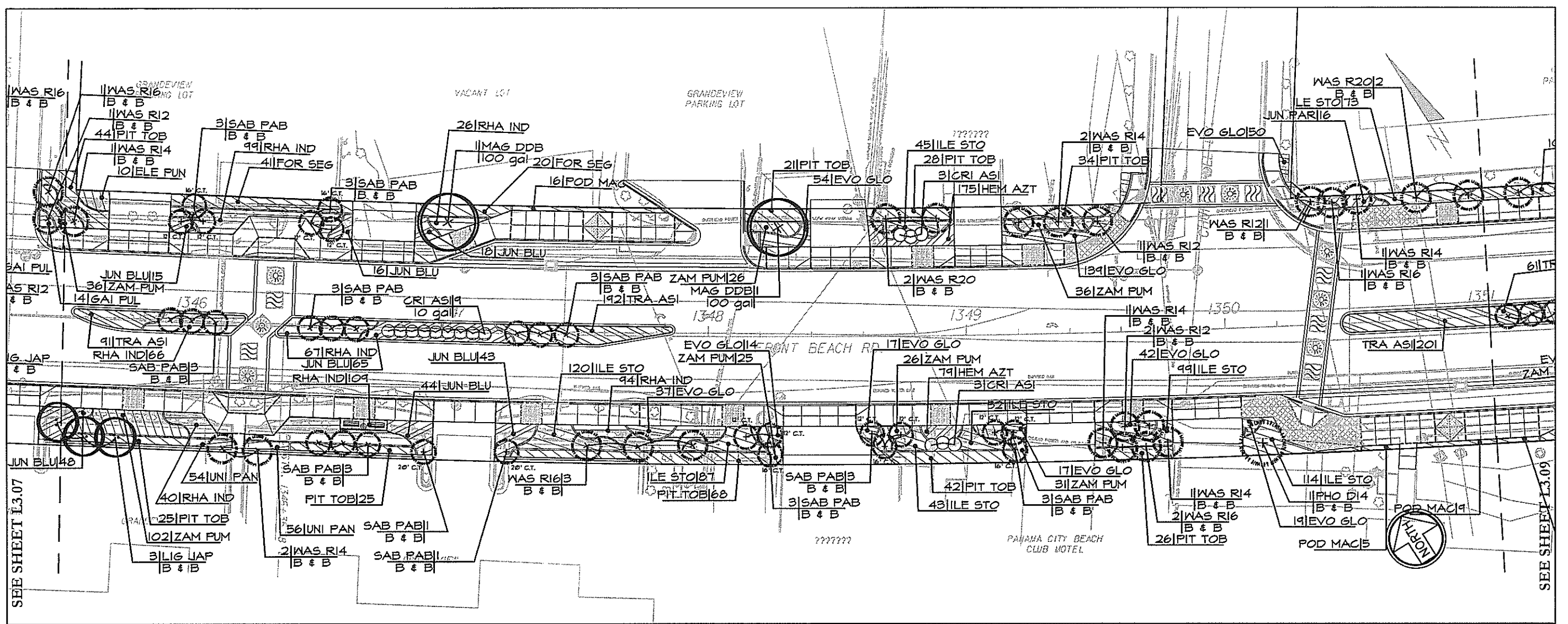


CITY OF
PANAMA CITY BEACH
 CONSTRUCTION PLANS FOR:
FRONT BEACH ROAD

Prepared by:

 planning, landscape architecture & graphic design
 423 south taller road, suite 300
 orlando, fl 32810
 phone 407.422.1449
 fax 407.875.0851
 FLORIDA LICENSE LCC 000027
RANDY RAIMAN
 FL. REG. # 460

LANDSCAPE PLAN
FRONT BEACH ROAD SEGMENT 2 L3.04
 SHEET NO.

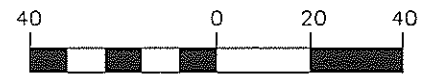


LEGEND

- QUANTITY OF PLANT
 PLANT KEY -
 REF. TO PLANT LIST
- 100 GAL.
- 12 CT.
- PALM TREE CLEAR TRUNK HT.
- SHRUB/GROUND COVER AREA
- SOD

REFER TO SHTS. L4.01 & L4.02 FOR PLANT LIST

NOTE: GALLON SIZE SHOWN IS MINIMUM.
 PLANTS TO BE SELECTED FOR OVERALL
 HEIGHT AND SPREAD.



This plan may have been reduced
 in size. Verify before scaling dimensions

Prepared by:



planning, landscape architecture
 & graphic design
 423 south keller road, suite 300
 orlando, fl 32810
 phone 407.422.1449
 fax 407.875.0651
 FLORIDA LICENSE LCC 000027

RANDY RAIMAN
 FL. REG. # 460

REVISIONS					
DATE	BY	DESCRIPTION	DATE	BY	DESCRIPTION

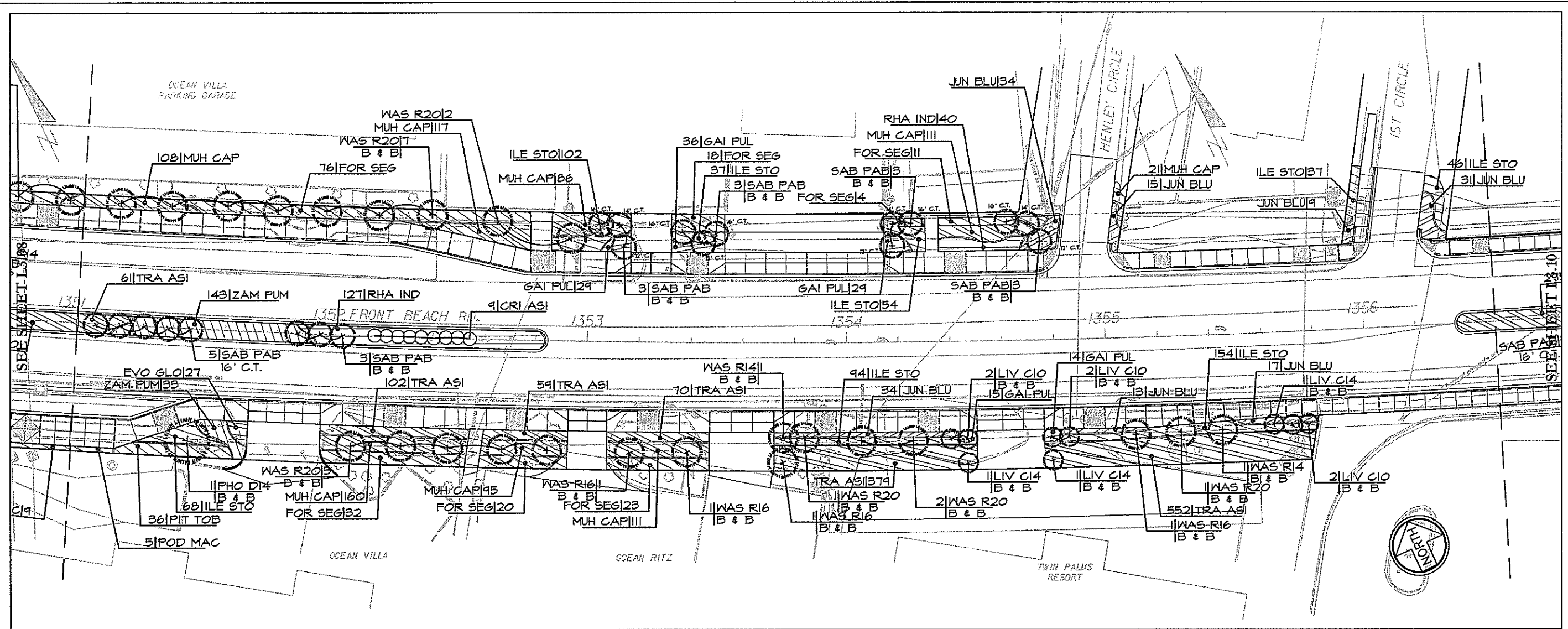
Engineer of Record:
PBSJ
 7406 Fullerton Street
 Suite 350
 Jacksonville, FL 32256
 (904) 363-6100
 www.pbsj.com
 Certificate of Authorization No. 24



CITY OF
PANAMA CITY BEACH
 CONSTRUCTION PLANS FOR:
 FRONT BEACH ROAD

LANDSCAPE PLAN
FRONT BEACH ROAD SEGMENT 2

SHEET
 NO.
L3.08



LEGEND

- QUANTITY OF PLANT
 PLANT KEY - REF. TO PLANT LIST
- PALM TREE CLEAR TRUNK HT.
- SHRUB/GROUND COVER AREA
- SOD
- QUE-VIR 100 GAL.
- GAL. SIZES ARE MINIMUM. PLANTS TO BE SELECTED FOR OVERALL HT. & SPREAD

REFER TO SHTS. L4.01 & L4.02 FOR PLANT LIST



This plan may have been reduced in size. Verify before scaling dimensions

NOTE: GALLON SIZE SHOWN IS MINIMUM. PLANTS TO BE SELECTED FOR OVERALL HEIGHT AND SPREAD.

Prepared by:



planning, landscape architecture & graphic design
 423 south kafer road, suite 300
 orlando, fl 32810
 phone 407.422.1449
 fax 407.875.0851
 FLORIDA LICENSE LCC 000027

RANDY RAIMAN
 FL. REG. # 460

REVISIONS					
DATE	BY	DESCRIPTION	DATE	BY	DESCRIPTION

Engineer of Records:
PBSJ
 7406 Fullerton Street
 Suite 350
 Jacksonville, FL 32256
 (904) 363-6100
 www.pbsj.com
 Certificate of Authorization No. 24

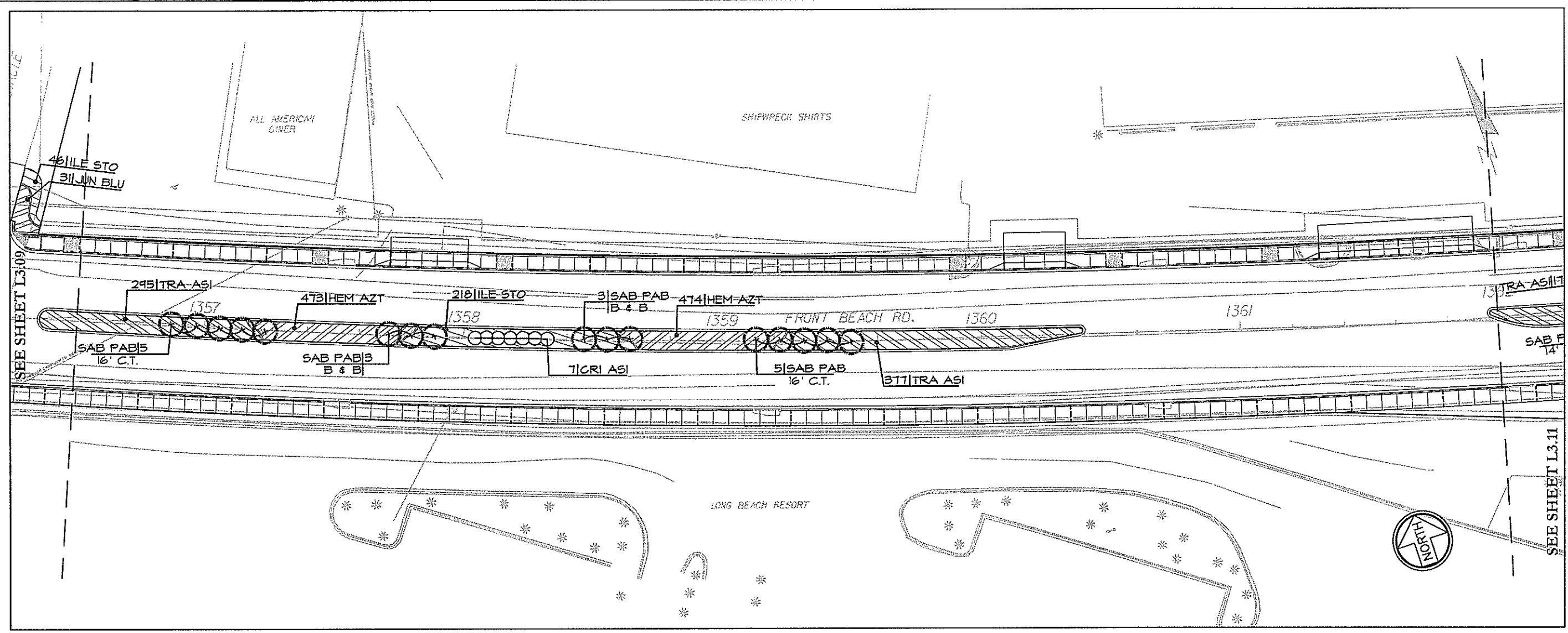


CITY OF
PANAMA CITY BEACH
 CONSTRUCTION PLANS FOR:
 FRONT BEACH ROAD

LANDSCAPE PLAN
FRONT BEACH ROAD SEGMENT 2 L3.09

SHEET NO.

L3.09

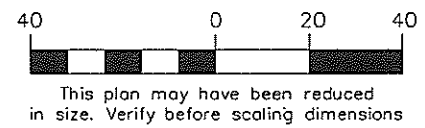


LEGEND

- QUANTITY OF PLANT
 PLANT KEY -
 REF. TO PLANT LIST
- QUE-VIR
 100GAL.
- GAL. SIZES ARE MINIMUM.
 PLANTS TO BE SELECTED
 FOR OVERALL HT. & SPREAD
- 12 C.T.
 PALM TREE CLEAR TRUNK HT.
- SHRUB/GROUND COVER AREA
- SOD

REFER TO SHTS. L4.014.02 FOR PLANT LIST

NOTE: GALLON SIZE SHOWN IS MINIMUM.
 PLANTS TO BE SELECTED FOR OVERALL
 HEIGHT AND SPREAD.



Prepared by:



planning, landscape architecture
 & graphic design
 423 south talley road, suite 300
 orlando, fl 32819
 phone 407.422.1449
 fax 407.875.0851
 FLORIDA LICENSE LCC 000027

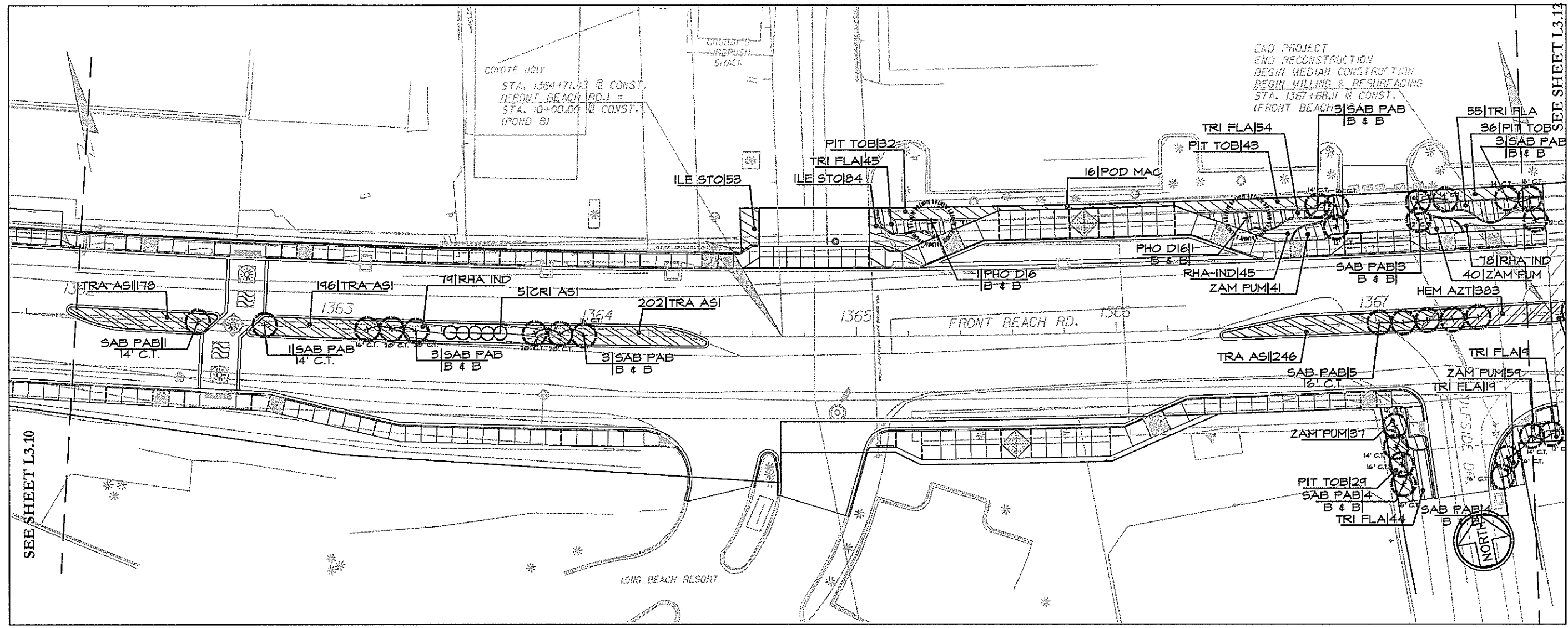
RANDY RAIMAN
 FL. REG. # 460

REVISIONS						Engineer of Records PBSJ 7406 Fullerton Street Suite 350 Jacksonville, FL 32256 (904) 363-6100 www.pbsj.com Certificate of Authorization No. 24		CITY OF PANAMA CITY BEACH CONSTRUCTION PLANS FOR: FRONT BEACH ROAD	LANDSCAPE PLAN FRONT BEACH ROAD SEGMENT 2	SHEET NO. L3.10
DATE	BY	DESCRIPTION	DATE	BY	DESCRIPTION					

Karl Miller

6/18/09

h:\Projects\2003 FBR Final Design-5 Thomas to Beck\lch\Acad\Owgs\Landscape Set.dwg



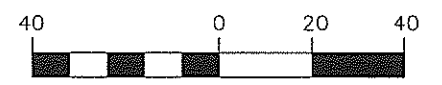
SEE SHEET L3.10

LEGEND

- QUANTITY OF PLANT
PLANT KEY -
REF. TO PLANT LIST
- QUE-VIR
100 GAL.
- 12 CT
- PALM TREE CLEAR TRUNK HT.
- SHRUB/GROUND COVER AREA
- SOD

REFER TO SHTS. L4.014, L4.02 FOR PLANT LIST

GAL. SIZES ARE MINIMUM.
PLANTS TO BE SELECTED
FOR OVERALL HT. & SPREAD



This plan may have been reduced in size. Verify before scaling dimensions

NOTE: GALLON SIZE SHOWN IS MINIMUM.
PLANTS TO BE SELECTED FOR OVERALL
HEIGHT AND SPREAD.

Prepared by:



planning, landscape architecture
& graphic design
423 south Keller road, suite 300
Orlando, FL 32810
phone 407.822.1449
fax 407.875.0851
FLORIDA LICENSE LCC 000027

RANDY RAIMAN
FL. REG. # 460

REVISIONS					
DATE	BY	DESCRIPTION	DATE	BY	DESCRIPTION

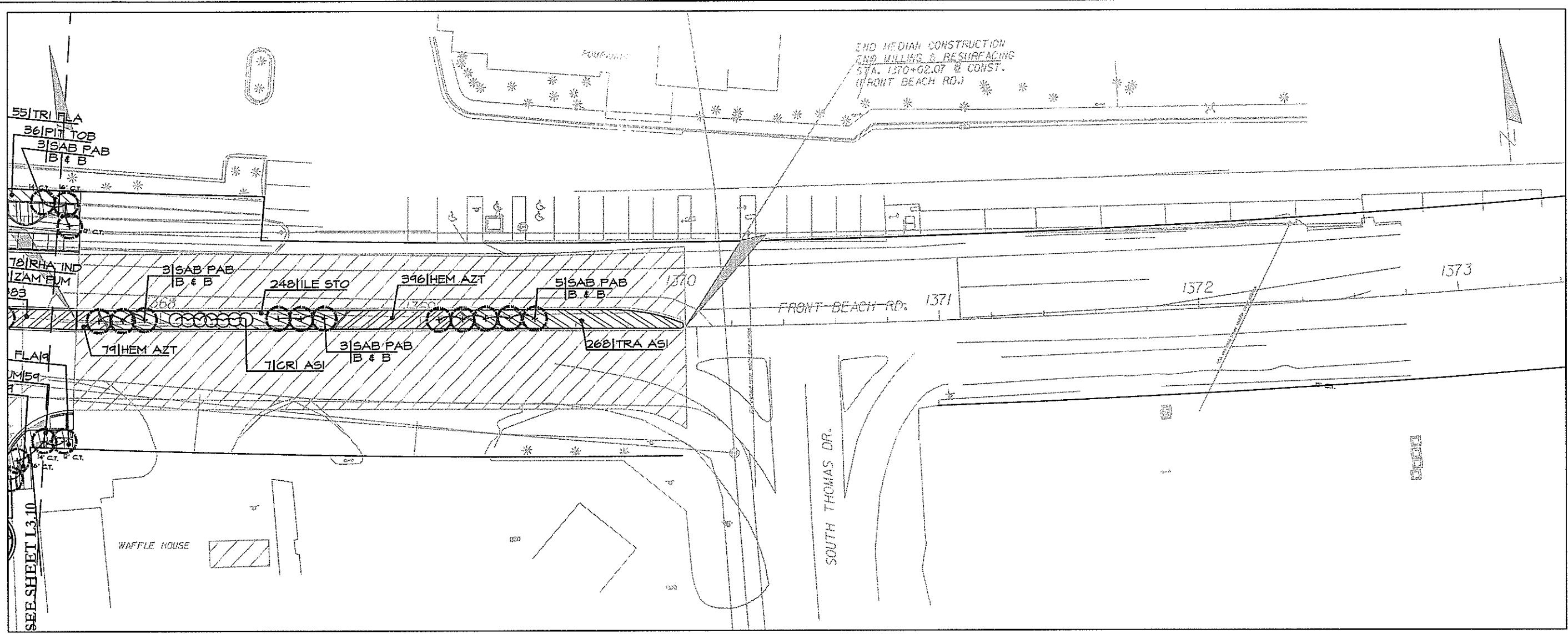
Engineer of Record:
PBSJ
7406 Fullerton Street
Suite 350
Jacksonville, FL 32256
(904) 363-6100
www.pbsj.com
Certificate of Authorization No. 24



CITY OF
PANAMA CITY BEACH
CONSTRUCTION PLANS FOR:
FRONT BEACH ROAD

LANDSCAPE PLAN
FRONT BEACH ROAD SEGMENT 2

SHEET NO.
L3.11

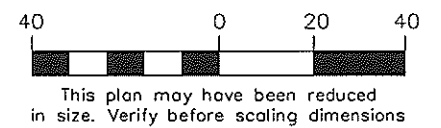


LEGEND

- QUANTITY OF PLANT
 PLANT KEY -
 REF. TO PLANT LIST
- QUE-VIR
 100 GAL.
- 12 CT
 PALM TREE CLEAR TRUNK HT.
- SHRUB/GROUND COVER AREA
- SOD
- GAL. SIZES ARE MINIMUM.
 PLANTS TO BE SELECTED
 FOR OVERALL HT. & SPREAD

REFER TO SHTS. L4.014L4.02 FOR PLANT LIST

NOTE: GALLON SIZE SHOWN IS MINIMUM.
 PLANTS TO BE SELECTED FOR OVERALL
 HEIGHT AND SPREAD.



Prepared by:



planning, landscape architecture
 & graphic design
 423 south kalbar road, suite 300
 orlando, fl 32819
 phone 407.422.1449
 fax 407.875.0651
 FLORIDA LICENSE LCC 000027

RANDY RAIMAN
 FL. REG. # 460

REVISIONS					
DATE	BY	DESCRIPTION	DATE	BY	DESCRIPTION

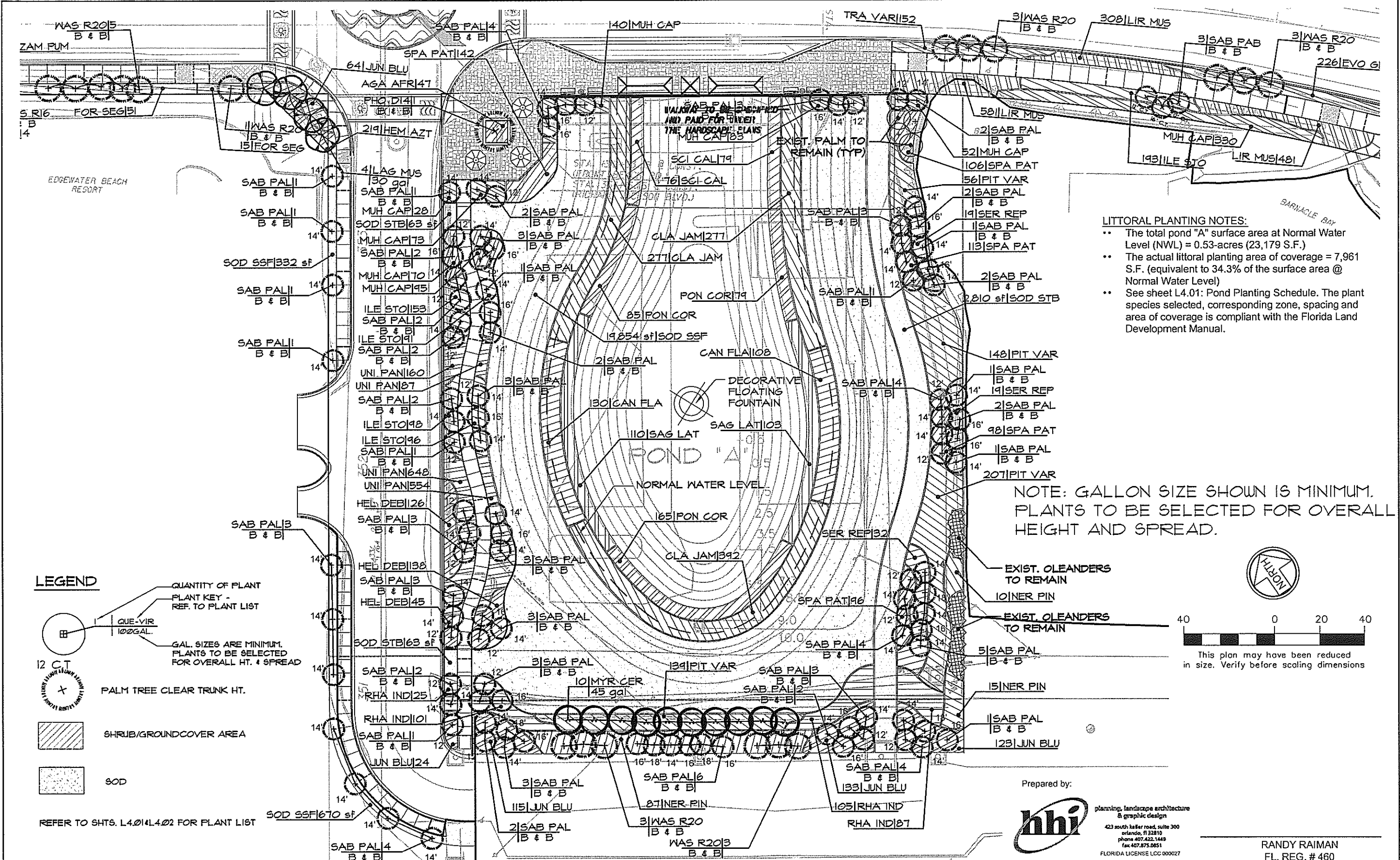
Engineer of Record:
PBSJ
 7406 Fullerton Street
 Suite 350
 Jacksonville, FL 32256
 (904) 363-6100
 www.pbsj.com
 Certificate of Authorization No. 24



CITY OF
PANAMA CITY BEACH
 CONSTRUCTION PLANS FOR:
 FRONT BEACH ROAD

LANDSCAPE PLAN
FRONT BEACH ROAD SEGMENT 2

SHEET
 NO.
L3.12



LITTORAL PLANTING NOTES:


- The total pond "A" surface area at Normal Water Level (NWL) = 0.53-acres (23,179 S.F.)
- The actual littoral planting area of coverage = 7,961 S.F. (equivalent to 34.3% of the surface area @ Normal Water Level)
- See sheet L4.01: Pond Planting Schedule. The plant species selected, corresponding zone, spacing and area of coverage is compliant with the Florida Land Development Manual.

NOTE: GALLON SIZE SHOWN IS MINIMUM. PLANTS TO BE SELECTED FOR OVERALL HEIGHT AND SPREAD.

LEGEND

- QUANTITY OF PLANT PLANT KEY - REF. TO PLANT LIST
- QUE-VIR 100 GAL.
- GAL. SIZES ARE MINIMUM. PLANTS TO BE SELECTED FOR OVERALL HT. & SPREAD
- 12 C.T. PALM TREE CLEAR TRUNK HT.
- SHRUB/GROUNDCOVER AREA
- SOD
- REFER TO SHTS. L4.01 & L4.02 FOR PLANT LIST

Prepared by:

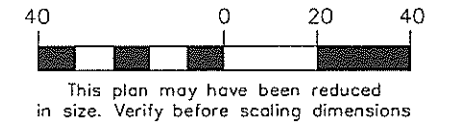


planning, landscape architecture & graphic design
423 south kafer road, suite 300
orlando, fl 32819
phone 407.432.1449
fax 407.875.0851
FLORIDA LICENSE LCC 000027

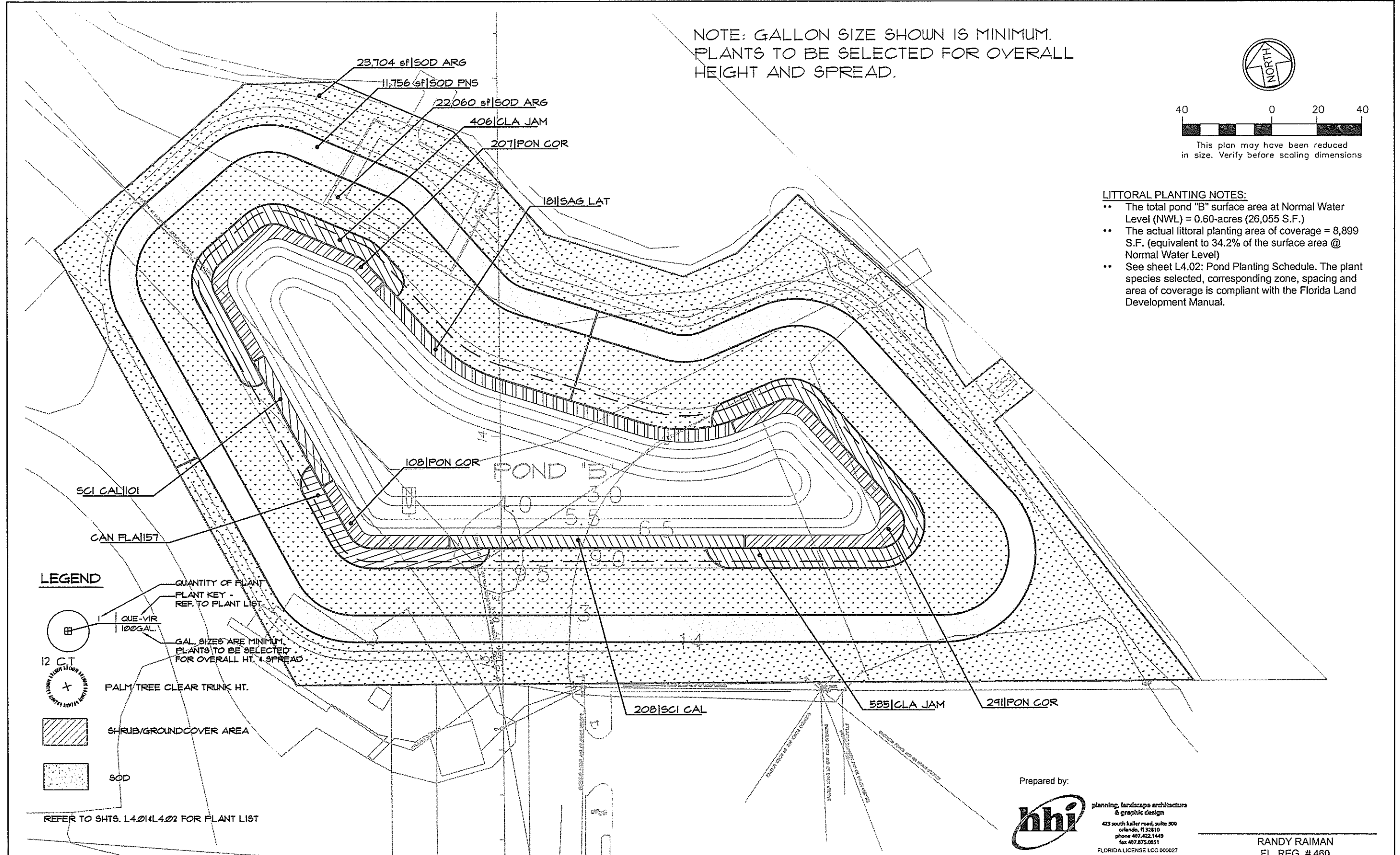
RANDY RAIMAN
FL. REG. # 460

REVISIONS						Engineer of Records: PBSJ 7406 Fullerton Street Suite 350 Jacksonville, FL 32256 (904) 363-6100 www.pbsj.com Certificate of Authorization No. 24	 CITY OF PANAMA CITY BEACH CONSTRUCTION PLANS FOR: FRONT BEACH ROAD	LANDSCAPE PLAN FRONT BEACH ROAD SEGMENT 2 L3.13	SHEET NO.
DATE	BY	DESCRIPTION	DATE	BY	DESCRIPTION				

NOTE: GALLON SIZE SHOWN IS MINIMUM.
PLANTS TO BE SELECTED FOR OVERALL
HEIGHT AND SPREAD.



- LITTORAL PLANTING NOTES:**
- The total pond "B" surface area at Normal Water Level (NWL) = 0.60-acres (26,055 S.F.)
 - The actual littoral planting area of coverage = 8,899 S.F. (equivalent to 34.2% of the surface area @ Normal Water Level)
 - See sheet L4.02: Pond Planting Schedule. The plant species selected, corresponding zone, spacing and area of coverage is compliant with the Florida Land Development Manual.



LEGEND

- QUE-VIR 100 GAL.
- GAL. SIZES ARE MINIMUM. PLANTS TO BE SELECTED FOR OVERALL HT. & SPREAD
- PALM/TREE CLEAR TRUNK HT.
- SHRUB/GROUND COVER AREA
- SOD

REFER TO SHTS. L4.01 & L4.02 FOR PLANT LIST

Prepared by:
hbi planning, landscape architecture & graphic design
423 south keller road, suite 300
orlando, fl 32810
phone 407.422.1449
fax 407.875.0051
FLORIDA LICENSE LCC 000027

RANDY RAIMAN
FL. REG. # 460

REVISIONS					
DATE	BY	DESCRIPTION	DATE	BY	DESCRIPTION

Engineer of Records:
PBS&J
7406 Fullerton Street
Suite 350
Jacksonville, FL 32256
(904) 363-6100
www.pbsj.com
Certificate of Authorization No. 24



CITY OF
PANAMA CITY BEACH
CONSTRUCTION PLANS FOR:
FRONT BEACH ROAD

LANDSCAPE PLAN
FRONT BEACH ROAD SEGMENT 2

SHEET NO.
L3.14